



Certificate of Analysis

Customer:
Pharm CBD
2580 Highway 42 West
Bedford, KY 40006

Sample ID: **210423016**
Order Number: **CB210423005**
Sample Name: **PP-19004-2**

Collected Date:
Received Date: **7/23/2021**
COA Released: **7/23/2021**

External Sample ID:
Batch Number: **PP-19004**
Product Type: **Other**
Sample Type: **Other**

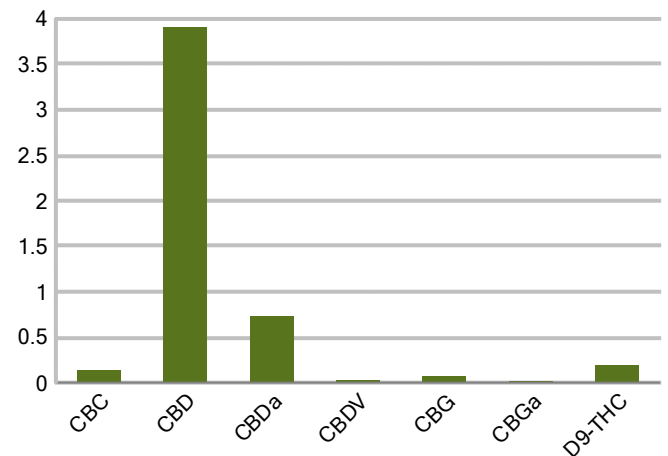
Comments:

CANNABINOID PROFILE

Analyte	LOQ (%)	% weight	mg/g
CBC	0.01	0.137	1.368
CBD	0.01	3.906	39.06
CBDa	0.01	0.734	7.337
CBDV	0.01	0.027	0.271
CBG	0.01	0.068	0.675
CBGa	0.01	0.013	0.126
CBN	0.01	ND	ND
d8-THC	0.01	ND	ND
d9-THC	0.01	0.192	1.918
THCa	0.01	ND	ND
Total Cannabinoids		5.076	50.76
Total Potential THC		0.192	1.918
Total Potential CBD		4.549	45.49
Total Potential CBG		0.079	0.786



Cannabinoids (% weight)



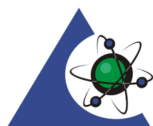
Ratio of Total Potential CBD to Total Potential THC 23.69 : 1

Ratio of Total Potential CBG to Total Potential THC 0.41 : 1

*Total Cannabinoids refers to the sum of all cannabinoids detected.

*Total Potential CBD = (0.877 x CBDa) + CBD. *Total Potential THC = (0.877 x THCa) + THC. *Total Potential CBG = (0.877 x CBGa) + CBG.

*Total Potential THC/CBD are calculated to take into account the loss of an acid group during decarboxylation.



PJLA
Testing
Accreditation #109588

Authorized Signature

Laboratory Manager

Jamie Hobgood

07/23/2021 11:21 PM

DATE

This product has been tested by CannaBusiness Laboratories using validated testing methodologies and a quality system. Values reported relate only to the product tested. CannaB Laboratories makes no claims as to the efficacy, safety, or other risks associated with any detected or non-detected levels of any compounds reported herein. This Certificate shall r reproduced except in full, without the written permission of CannaBusiness Laboratories. Uncertainty information is available on request. Photo is of sample received by the lab an vary from final packaging. The results apply to the sample as received. ISO/IEC 17025:2017 Accredited.



CannaBusiness Laboratories, LLC
2554 Palumbo Dr. Lexington, KY 40509



Sample ID: 210423016
Sample Name: PP-19004-2
Sample Type: Other

Certificate of Analysis

Customer

Pharm CBD
2580 Highway 42 West
Bedford, KY 40006



Overall Batch Results	
Pesticide	Moisture Content
Potency	Water Activity
Mycotoxins	Heavy Metals
Microbial Screen	Residual Solvents
Terpenoids	

Sample Name: PP-19004-2
Sample ID: 210423016
Product Type: Other
Sample Type: Other
Collected Date:
Received Date: 07/23/2021
Batch Number: PP-19004
Batch Size:
Sample Size:
COA released: 07/23/2021 11:21 PM

Potency (mg/g)			
Date Tested: 07/23/2021		Method: CB-SOP-028	
Instrument:			
0.192 % Total THC	4.549 % Total CBD	5.076 % Total Cannabinoids	50.76 mg/g Total Cannabinoids

Analyte	Result	Units	LOQ	Result	Units
CBC (Cannabichromene)	0.137	%	0.010	1.368	mg/g
CBD (Cannabidiol)	3.906	%	0.010	39.06	mg/g
CBDa (Cannabidiolic Acid)	0.734	%	0.010	7.337	mg/g
CBDV (Cannabidivarin)	0.027	%	0.010	0.271	mg/g
CBG (Cannabigerol)	0.068	%	0.010	0.675	mg/g
CBGa (Cannabigerolic Acid)	0.013	%	0.010	0.126	mg/g
CBN (Cannabinol)	ND	%	0.010	ND	mg/g
D8-THC (D8-Tetrahydrocannabinol)	ND	%	0.010	ND	mg/g
D9-THC (D9-Tetrahydrocannabinol)	0.192	%	0.010	1.918	mg/g
THCa (Tetrahydrocannabinolic Acid)	ND	%	0.010	ND	mg/g



Authorized Signature

Jamie Hobgood
Laboratory Manager

Jamie Hobgood

07/23/2021 11:21 PM

Date Time

NT = Not tested, ND = Not detected; LOQ = Limit of Quantitation; <LOQ = Detected; >ULOL = Above upper limit of linearity; CFU/g = Colony forming units per 1 gram; TNTC = Too numerous to count

CannaBusiness Laboratories
License # P-0059: (859)-514- 6999 <https://www.cannabusinesslabs.us>

This product has been tested by CannaBusiness Laboratories using validated testing methodologies and a quality system. Values reported relate only to the product tested. CannaBusiness Laboratories makes no claims as to the efficacy, safety, or other risks associated with any detected or non-detected levels of any compounds reported herein. This Certificate shall not be reproduced except in full, without the written permission of CannaBusiness Laboratories. Uncertainty information is available on request. Photo is of sample received by the lab and may vary from final packaging. The results apply to the sample as received. ISO/IEC 17025:2017 Accredited.